

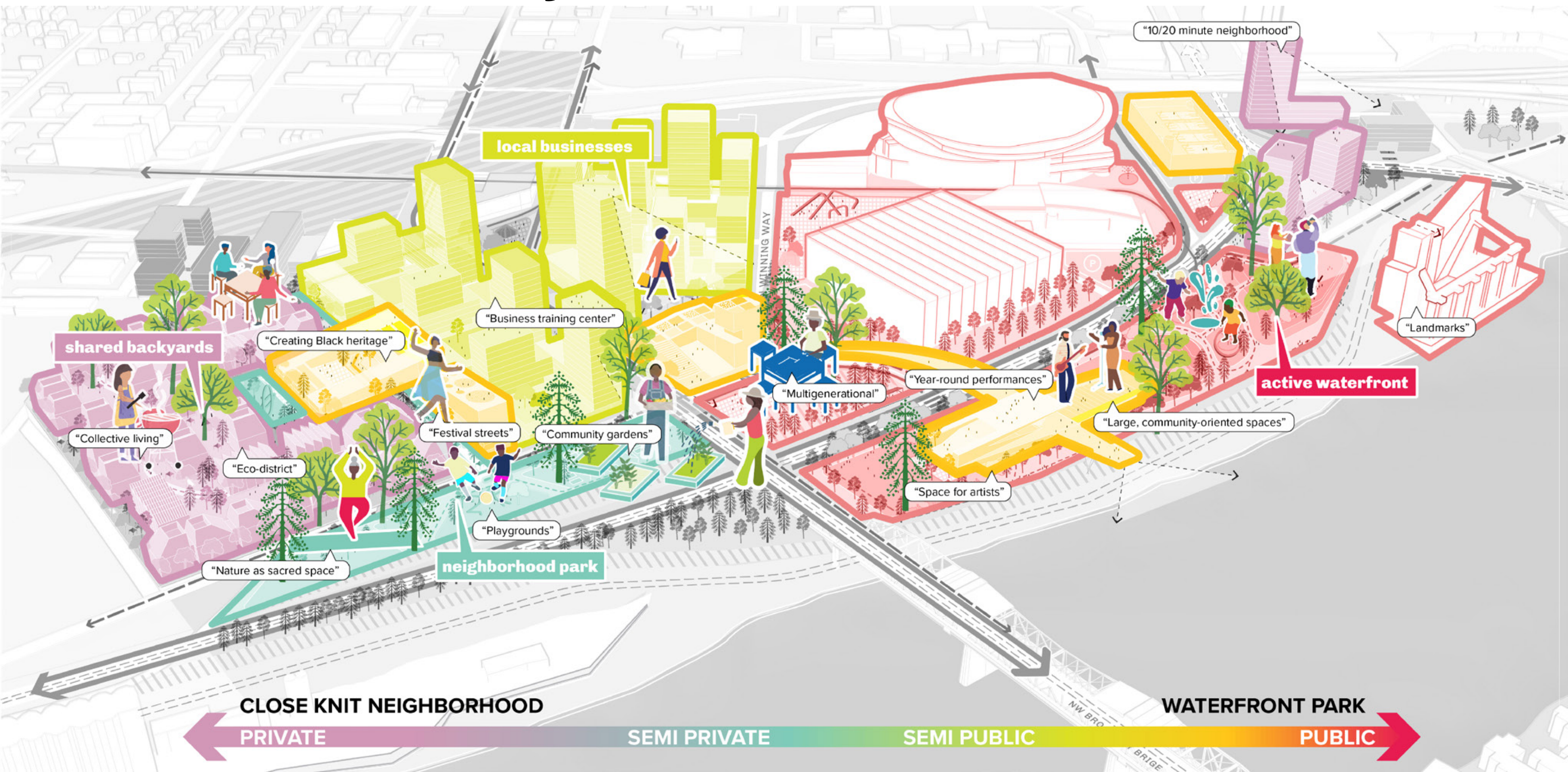
*“We are intentionally designing a new kind of community in the lower Albina area of Portland.  
The ground is special.  
It is a place where the racial inequity of urban renewal came, then came again, and again....  
Promises were made and broken. Black people and immigrants were displaced. Wealth was taken.  
The past mandates a special approach to a new and brighter future.”  
- Albina Vision Trust*

**The Albina Vision Community Investment Plan is a framework for returning home. Following decades of urban renewal, interstate highway construction, and development that prioritized large, inwardly facing civic spaces, this plan sought healing through community-driven design and radical joy. Community youth, artists and advocates came together for over 18 engagement sessions, during the pandemic, to craft a 100-year community vision. The collaborative mission has resulted in a neighborhood that enables community governance, generational wealth, and planning literacy. The outcome is a framework for livable spaces, a renewed sense of belonging, Black wealth generation and a vibrant public realm.**

Project Title	Albina Vision Community Investment Plan
Location	Portland / Oregon / United States
Completed Year	2022
Project Size	105 acres
Budget for Design + Construction	N/A
Submitter’s Role	Public Realm Design and Planning



# Albina Vision Community Investment Plan



The new Albina welcomes back community and cultural vibrancy. The neighborhood experiences a spectrum of spaces, from quiet gardens to bustling public spaces.



# ***100 Years of Community Vision for Albina, Portland, Oregon***



Public engagement participants wanted a new neighborhood for living, learning, playing, and growing amongst nature and open space.



# *Together, we move forward with Another Fragment of the Urban Renewal History*



1948



1962



2021

The Albina community today has fewer ownership opportunities.

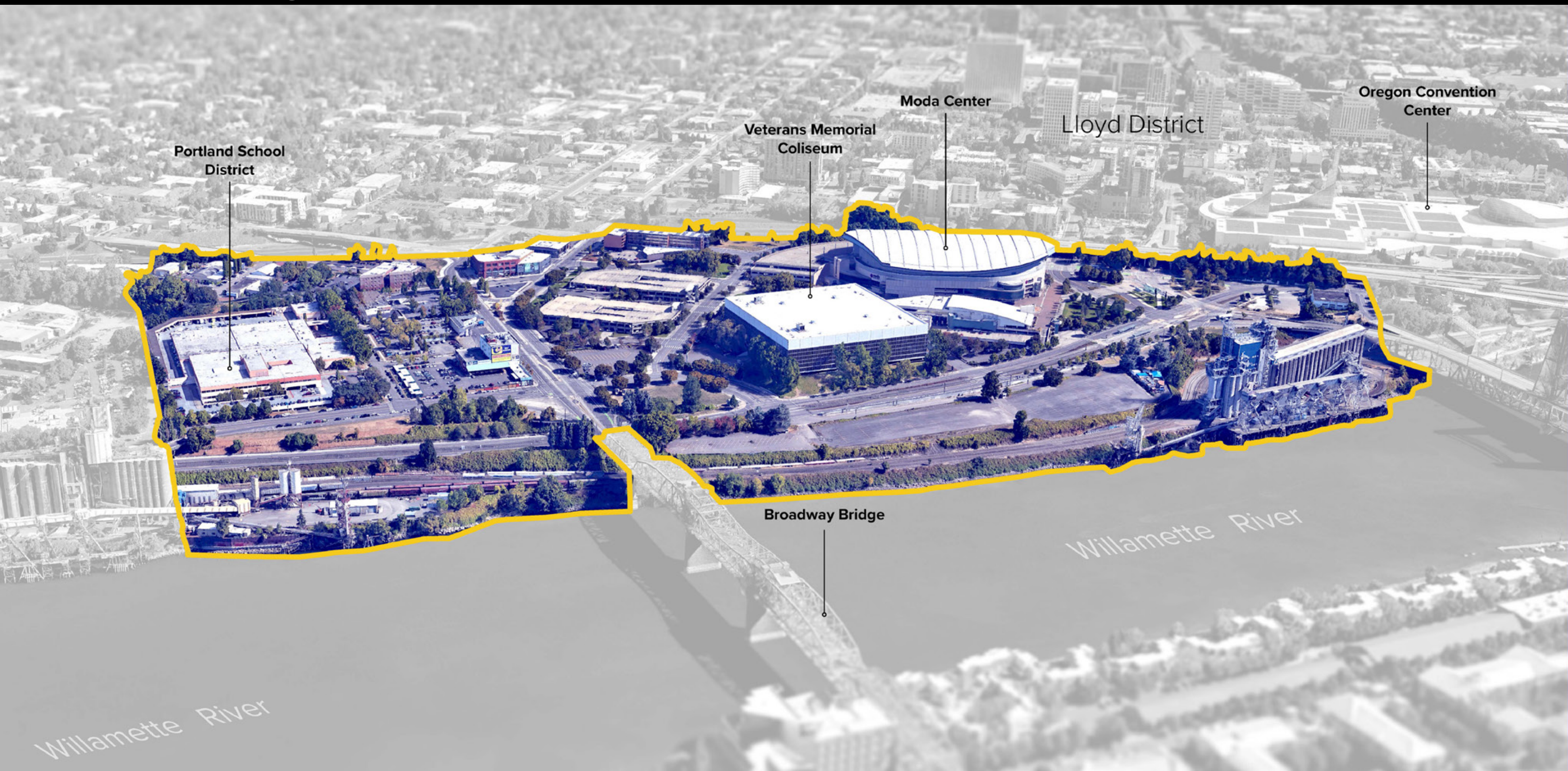
Homes in Albina today do not appreciate at the same rate.

Portland's Black residents still return to nearby community hubs to this day.

Infrastructure and urban renewal displaced a once-vibrant riverfront community. The close-knit neighborhood is now a sea of parking surrounding large-scale facilities.

## Albina Vision Community Investment Plan





Albina is now home to civic facilities, sports arenas, and impervious parking infrastructure to support large events.







# Engagement at Every Step of Design

18 Community Workshop Sessions, 563 Attendees, 163+ Pieces of Visual Input, 20k+ Words of Feedback

**Towards the future**  
From Conceptual to Physical  
**WELCOME! ALBINA**  
albinavision

**RESTORING ALBINA**  
ALBINA

**ACCESSIBILITY  
IDENTITY  
CONSISTENCY**

**green infrastructure**

“ Parks and **access to the river** are great opportunities in Albina ”

**Nourishment & Family**

**community and shared space**

**boundless open space**

**community and shared space**

currently "shared spaces" in the area are predominantly for vehicles. we need to dramatically shrink the footprint for cars so we can have places for people. What if all roads were 1-lane or banned vehicles through the area

Due to the pandemic, the 18 virtual community workshops generated powerful conversations and visual feedback through breakout rooms and digital collaboration platforms.



# Engagement at Every Step of Design

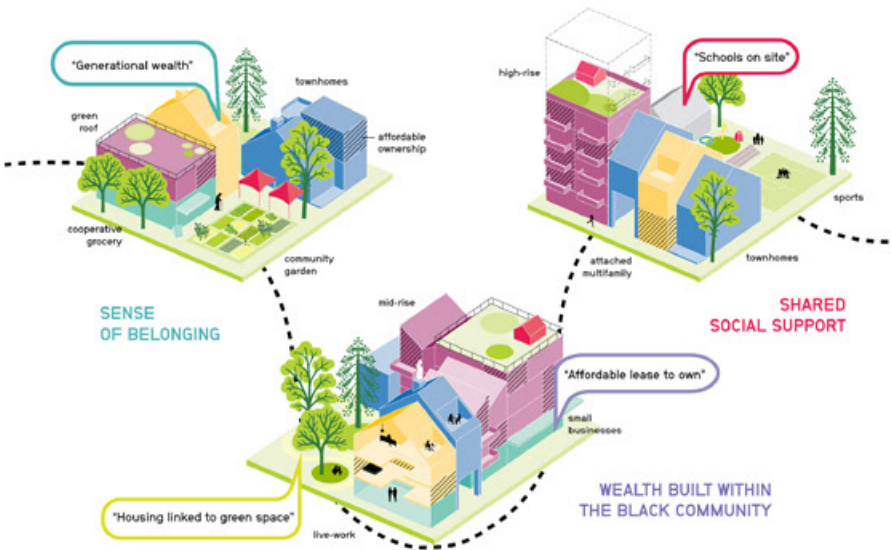
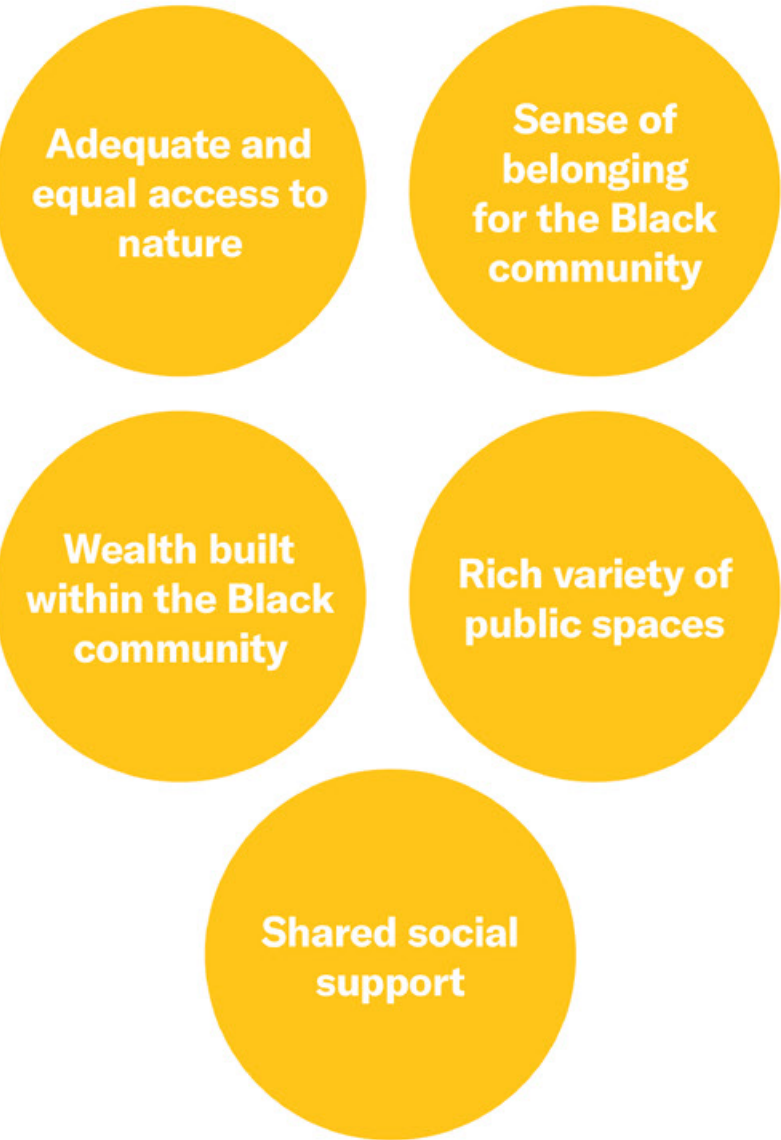


The workshops were facilitated by community leaders. Each series included a dedicated workshop for the Black community, youth, and general public.

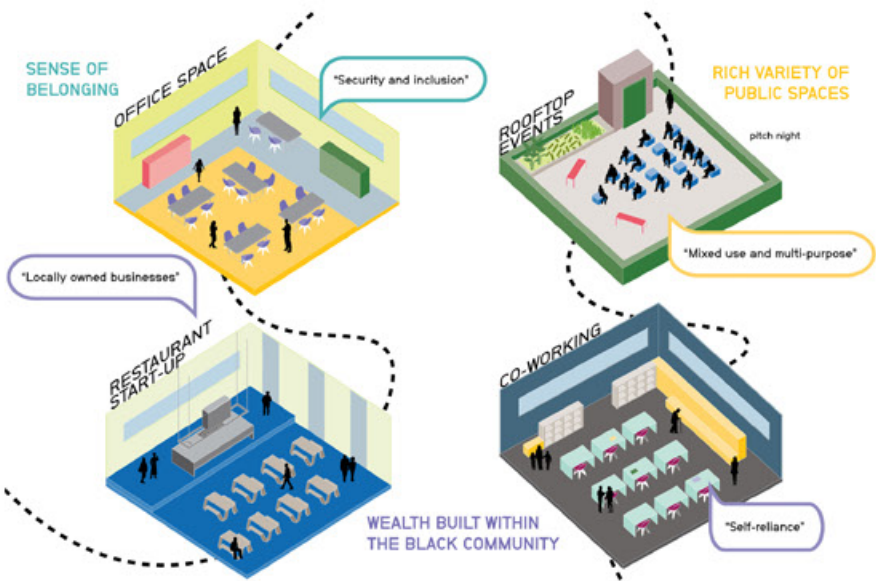


# A Rich Variety of Places

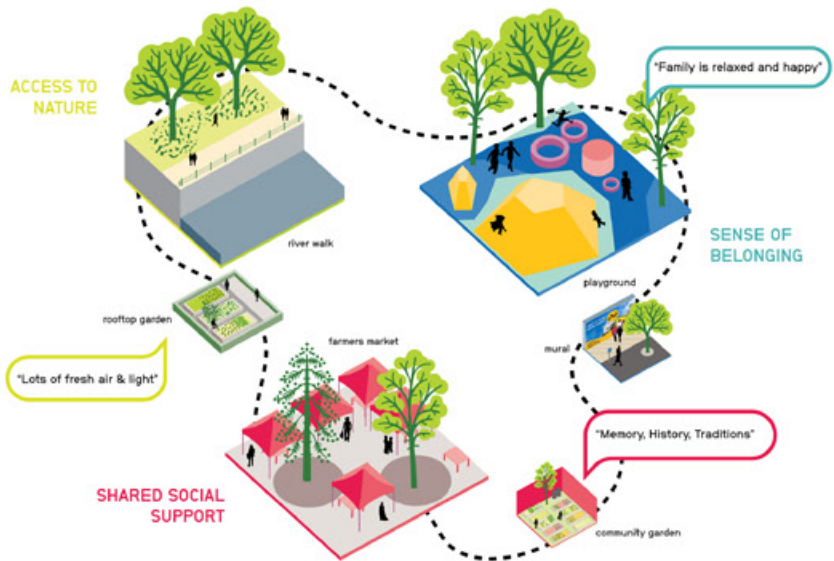
## What we heard...



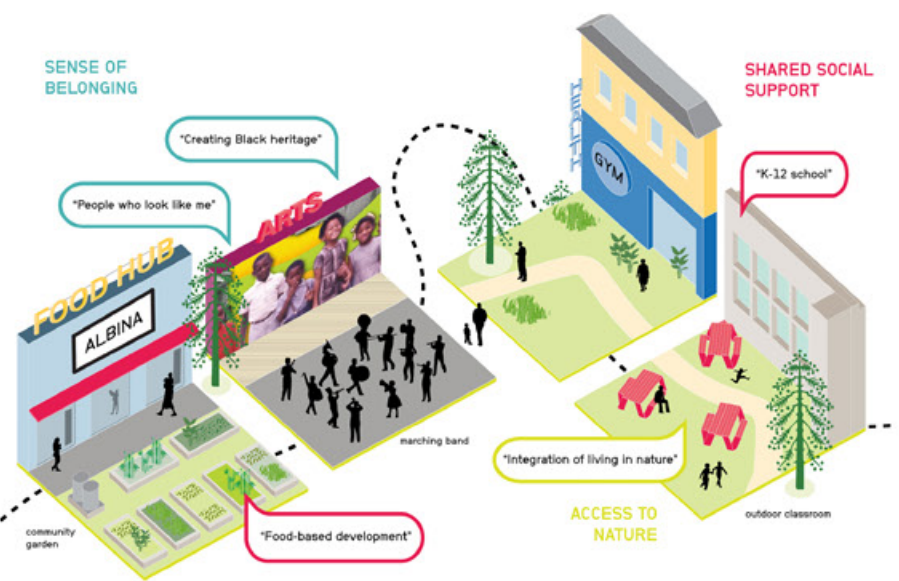
## Housing



## Commercial / Entrepreneurial



## Public Spaces

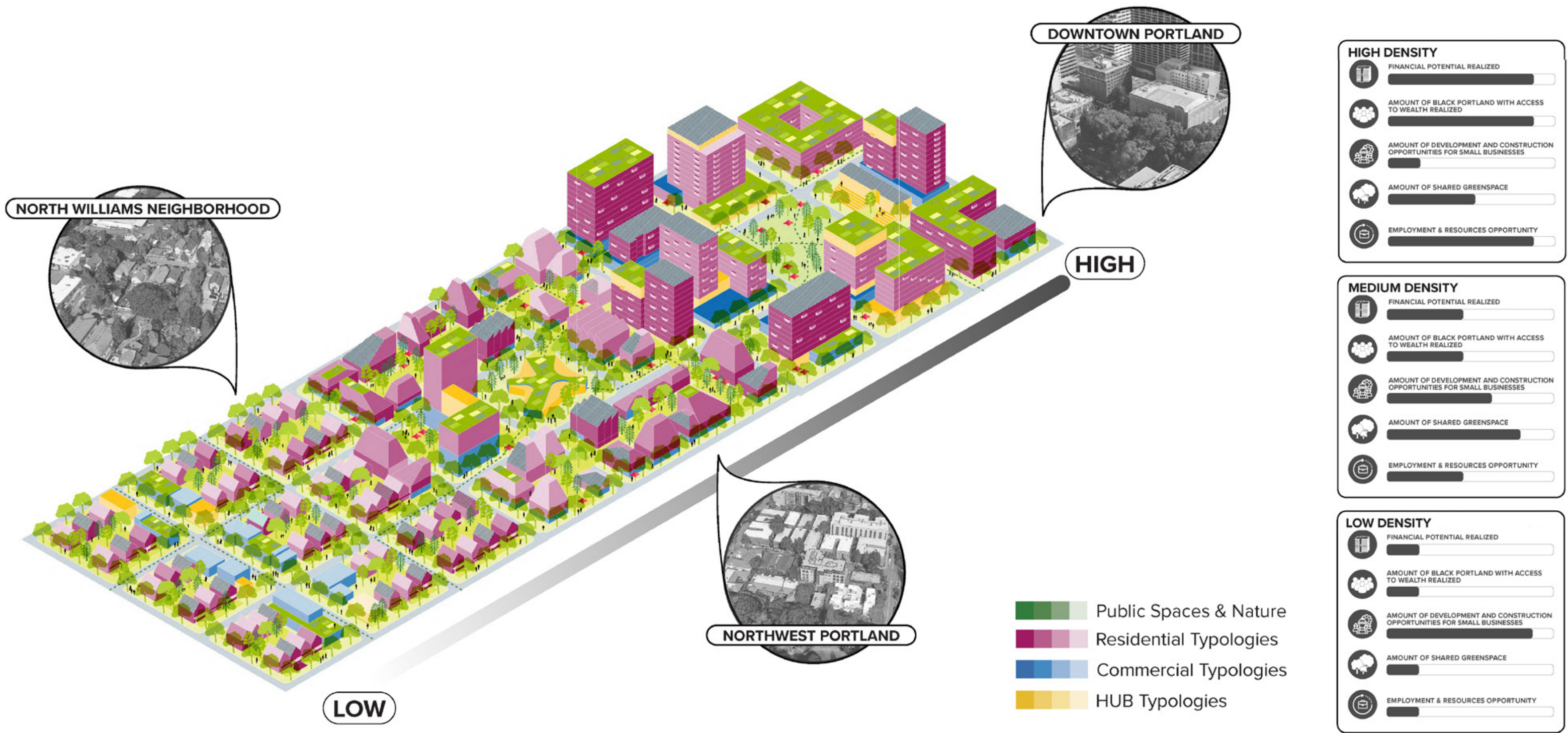


## Community Hubs

The vision for Albina is a place for the community to live, work, play, learn, and cultivate generational wealth.



# Not Just One Neighborhood Possibility, But a Mix...



The plan includes housing options from single family homes to high density development. Visual tools helped to envision development density tradeoffs.



# Community Feedback Shaped Program



Thousands of early community ideas, memories, and dreams were collected and visualized as experiences. These experiences directly informed the site design.



# Ambitious Long-term Action Plan for Albina



Four community hubs anchor the close knit neighborhood, commercial corridor, and public waterfront.



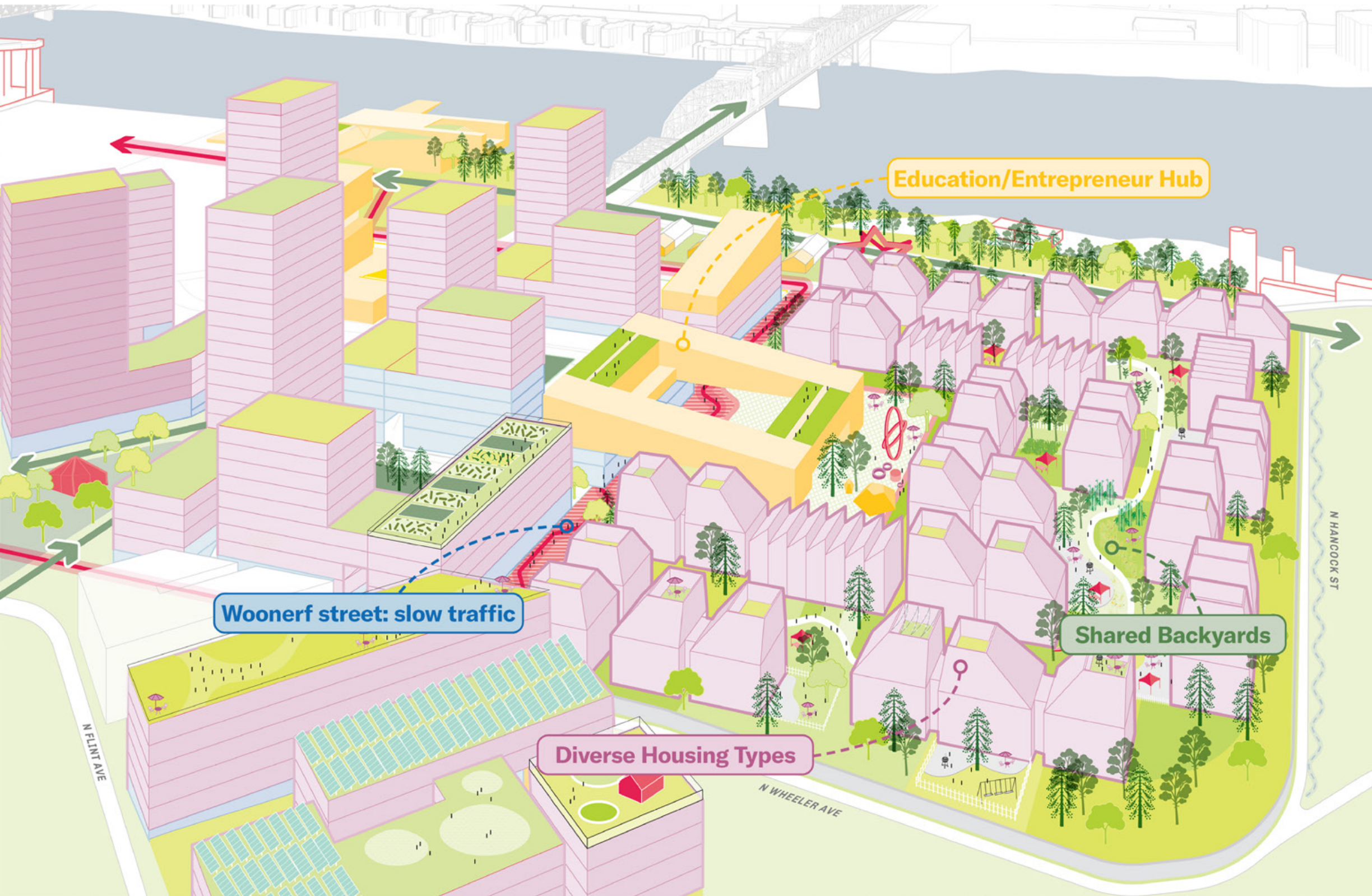
# ***Vibrant Public Realm***



Open spaces were a key component of the community feedback and are essential to the cohesion, health, and wellness of the neighborhood.



# Close Knit Neighborhood



Educational resources in your backyard and access to nature along the river.

A place where neighbors can look out for each other.

Car free, where vehicles are deliberately at the edges and streets.

The historic Albina neighborhood fabric created a sense of community and belonging. AVCIP recreates this and is anchored by the Education Hub.



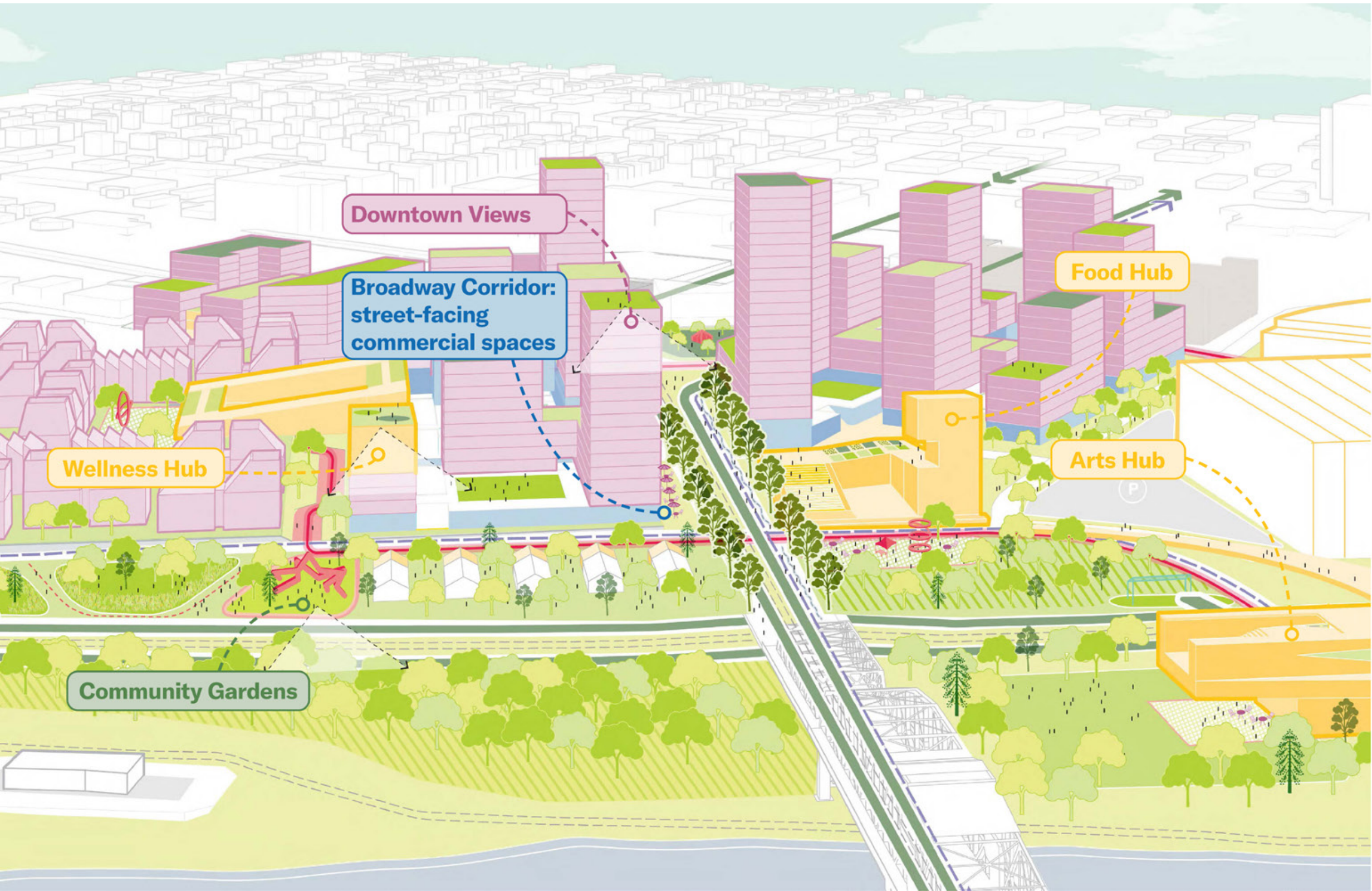
# ***Shared Backyards***



Continuous open spaces and backyards within the Close Knit Neighborhood create intimate spaces for play and community gathering.



# Broadway Gateway



Health services for physical and mental well-being of the community.

Urban agriculture, community kitchens, and Black-owned restaurants.

Thriving businesses help to make a neighborhood sustainable and successful.

The waterfront parks, Art and Food hubs, and bustling pedestrian-friendly corridor create a powerful threshold into the new Albina.



# ***100 Years of Community Vision for Albina***

*This is just the beginning...*



AVCIP catalyzes a community vision and identifies a series of catalyst projects that can build on momentum and deliver early action.

**Albina Vision Community Investment Plan**